



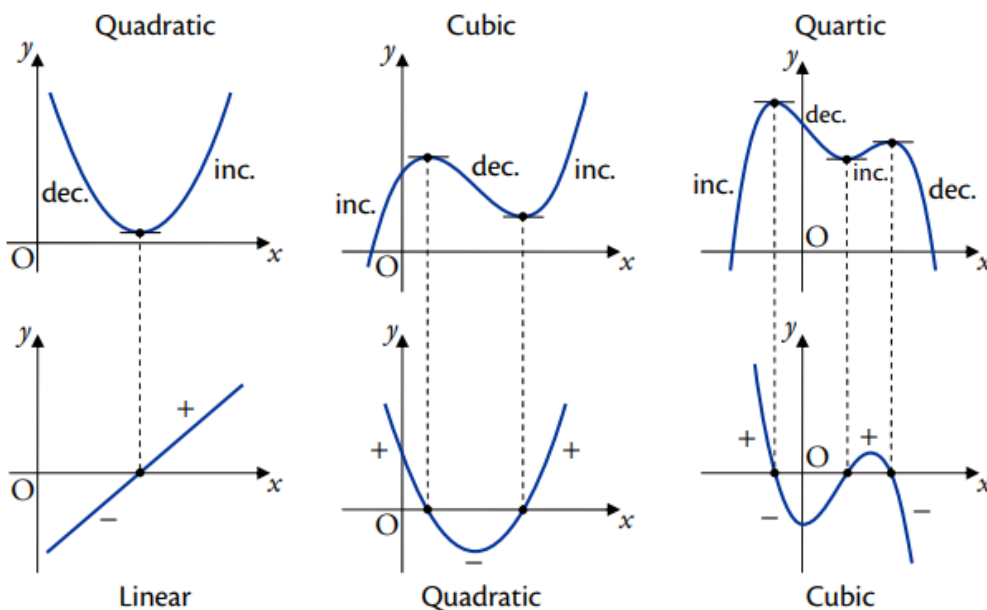
Heinemann

Higher Maths Text Book

Worked Solutions

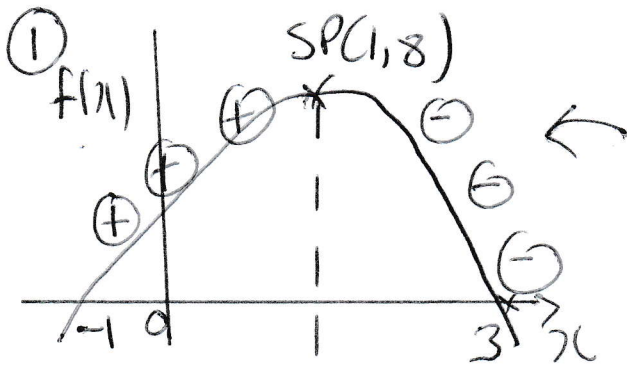
Ex 6P

Graphs of Derived Functions

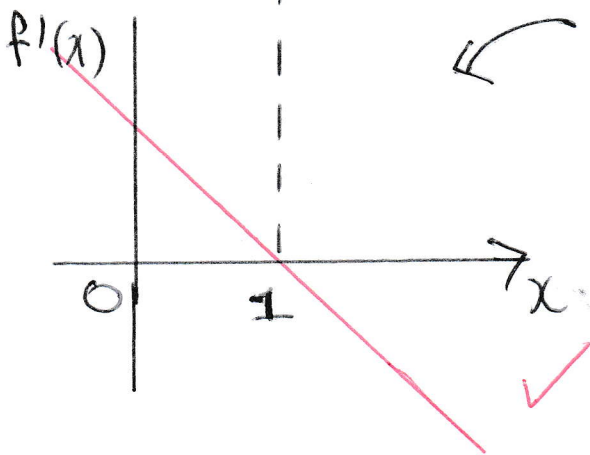


Ex 6P Questions 1 - 9

Worked solutions courtesy of Mr R Milton



(+) +'VE GRADIENT
 (-) -'VE GRADIENT



NOTES
 SP'S LIE ON X AXIS
 (+) → ABOVE X AXIS
 (-) → BELOW X AXIS

